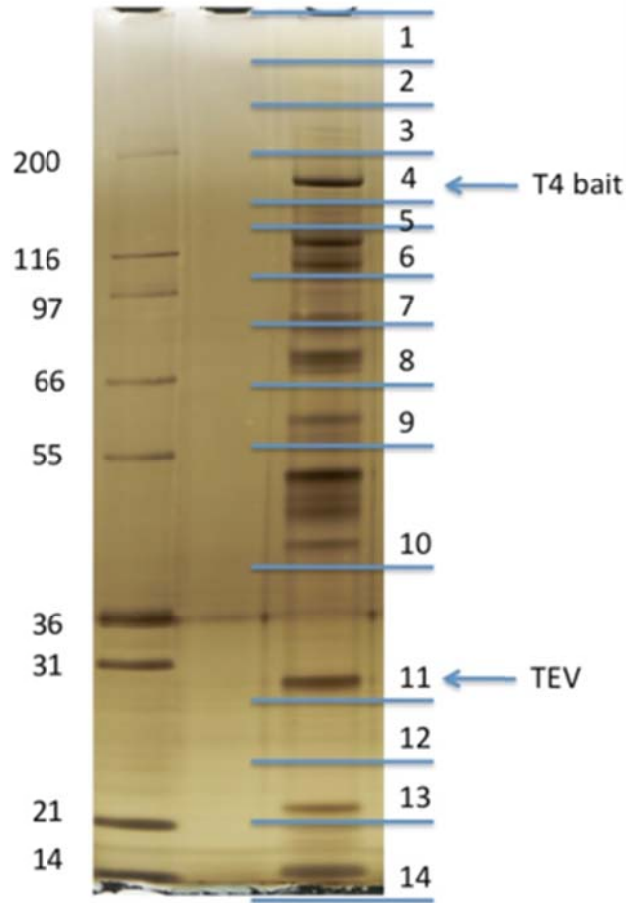


Email your Gel Image Instructions

When submitting a sample in which a protein mixture has been “fractionated” using SDS page gel chromatography please follow the instructions below as we require a picture of the actual gels being sent to us for analysis. Once your protein mixture is run on an SDS page gel please perform the following steps:

- **Email us an image of the exact gel you are sending, dumped into PowerPoint.**
- **Using the PowerPoint drawing tools, mark where you have made your cuts. Most gels have 6-10 cuts. Label the lanes identical to the sample names on the tubes and on your forms.**
- **Please use experimentally relevant names/acronyms like WT and MU, Treated/Vehicle, XXX/CTL, etc. In other words, use sample/lane names that help us understand the experimental objectives. Avoid using your initials.**
- **Number each slice/cut from *top to bottom* 1 thru N.**
- **Indicate the MW range of each cut.**
- **Email the PowerPoint file to: proteomics@fas.harvard.edu and rarobins@mcb.harvard.edu, preferably before your sample arrives. We cannot proceed without this document.**
- **In the same email the PowerPoint file, indicate project specifics - such as:**
 - **A description of each lane and what the name of each lane indicates. (Legend above)**
 - **Which lanes are being compared to which.**
 - **How are the gel lanes related? What are differences**
 - **Which, if any, is the control lane?**
 - **Is there a priority of interest to the lanes if we cannot process all at once?**
- **Below is an example of a properly labeled gel picture with sectioning and numbering.**



- **Above all, we need to know what you know.** Anything that is not indicated above but is germane to the project should also be in the email. If you have received this form without you or your PI having a prep and strategy discussion by phone, *do not send a sample.*