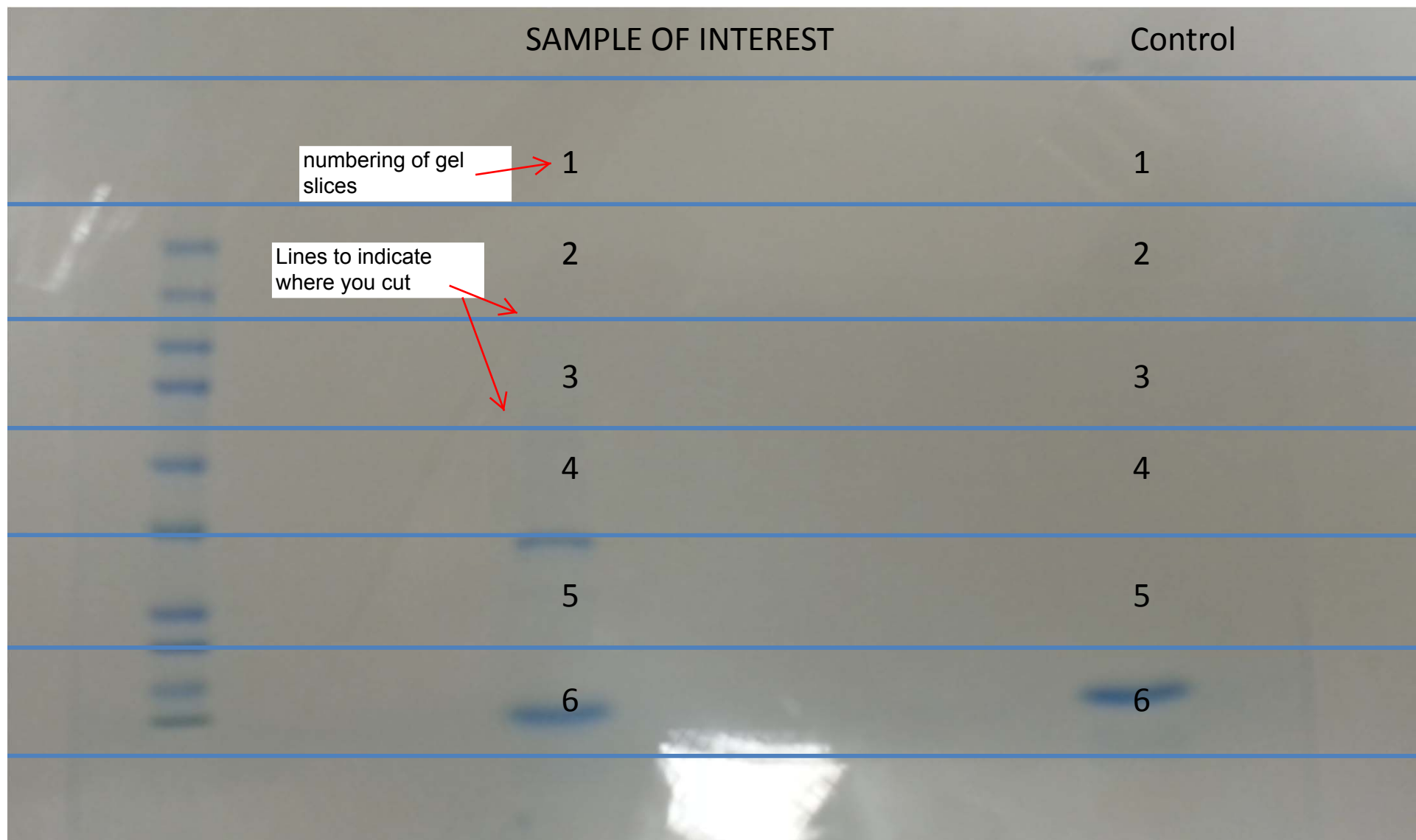


Email your Gel Picture Instructions

When submitting a sample in which a protein mixture has been “fractionated” using SDS page gel chromatography please follow the instructions below as we require a picture of the actual gels being sent to us for analysis. Once your protein mixture is run on an SDS page gel please perform the following steps:

- Email to us a picture of the exact gel you are sending.
- On the picture, using PowerPoint, mark where you have made your cuts. Most gels have 6-10 cuts.
- Number each slice/cut from top to bottom 1 thru N.
- Indicate the MW range of each cut.
- Email the picture to: hmf@harvard.edu
- In the same email, indicate project specifics - such as:
 - A description of each lane and what the name of each lane indicates.
 - Whether or not there are comparative lanes.
 - How are the gel lanes related? What are differences
 - Which, if any, is the control lane?
 - Is there a priority of interest to the lanes if we cannot process all at once?
- Include any pictures you may have of a previous experimental gel separation. For example if you ran a silver stained gel originally but reran using Coomassie and the Coomassie gel slices were sent to us but the silver gel gives a better picture and you want to include it for clarity. Make sure it is clearly labeled as to what it is and states on it “NOT WHAT WAS SENT”.
- Here is an example of a gel picture with cuts and numbering.



Be sure that tubes,
lane and section #
agree with what is on
your forms

Start numbering from
the top down with #1
being the highest
MW